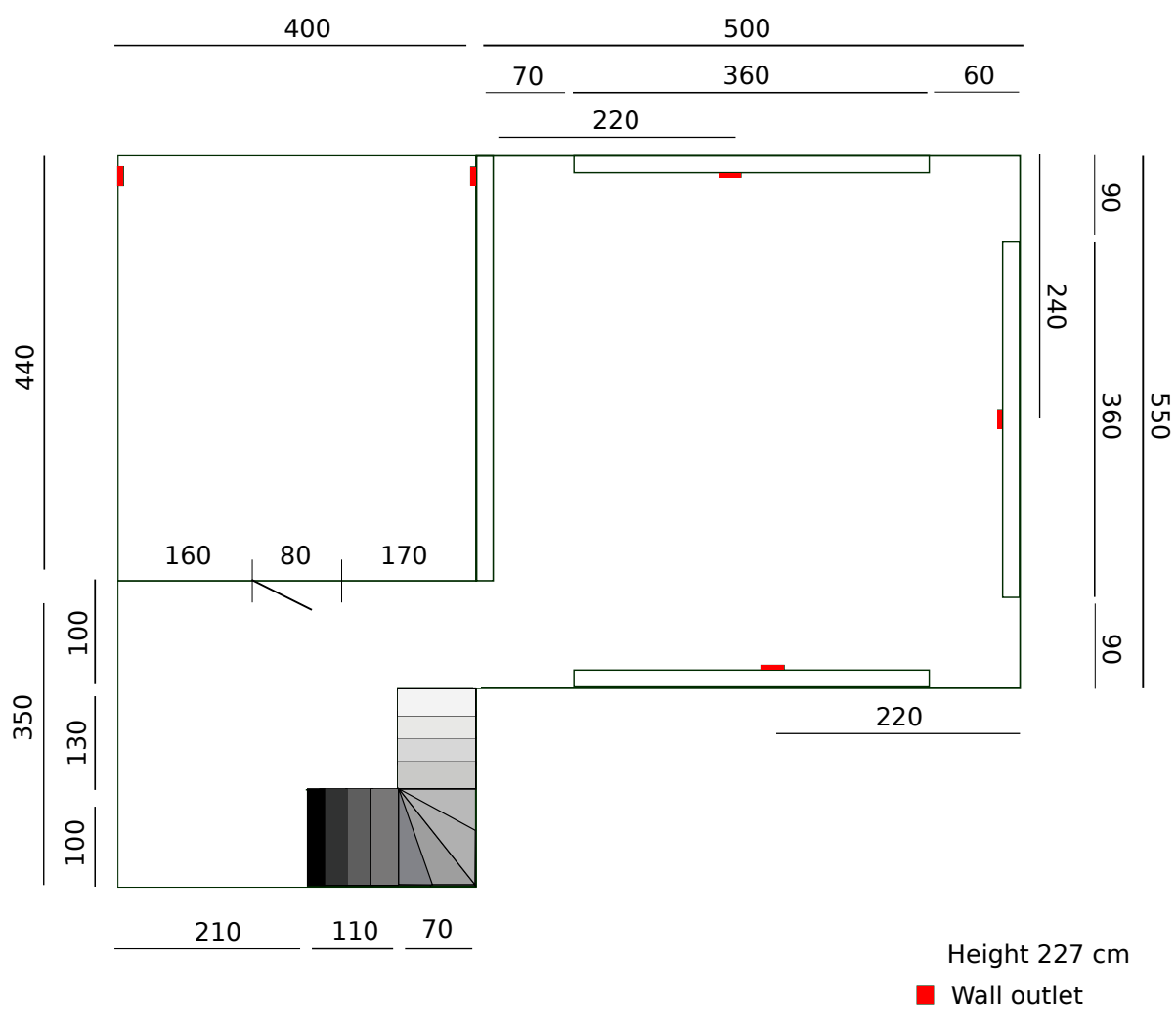


ONOMATOPEE upper floor plan





On the left side of above image, in between the first two pretty much horizontal beams, is the stair going down
 This space here is like a little hallway, but with a nice wall and intimate docu vibe, hangout feel as well

The photographer in above picture is standing where you enter the big 500 x 550 cm vide



Entrance to the vide / where the photographer of the top image stood



Here you see the three walls from the entrance point of view



Between the standing walls are 'viewpoints' to the warehouse



A view from the side to the 'docu space'



view from furthest corner in docu space



View from entrance of the docu space. Photographer in previous image stood underneath the black spotlight in the top left corner



The back-wall, entrance door on the left side, + remember the black spotlight